



# VAAGDEVI DEGREE & P.G COLLEGE

Kishanpura, Hanamkonda, Warangal



## INDEX

### EXPERIENTIAL LEARNING

S.No	DEPARTMENT
1	BIOTECH
2	BOTANY
3	CHEMISTRY UG & PG
4	FOOD SCIENCE & NUTRITION
5	MICROBIOLOGY
6	PHYSICS & ELECTRONICS
7	ZOOLOGY



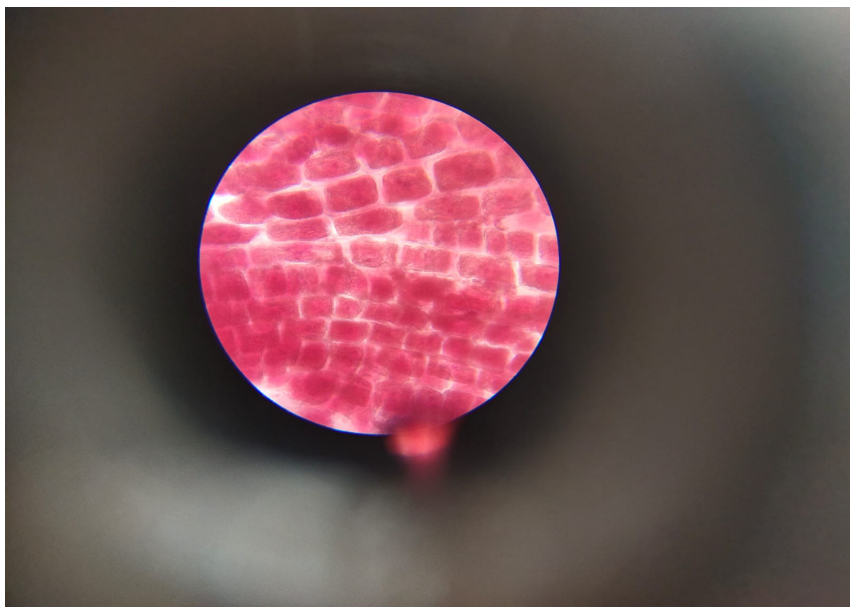
**VAAGDEVI DEGREE AND PG COLLEGE**  
**KISHANPURA, HANAMKONDA**



**DEPARTMENT OF BIOTECHNOLOGY**  
**Report on-**  
**EXPERIENTIAL LEARNING**

**TITLE: CELL BIOLOGY AND GENETICS/ BIOCHEMISTRY AND MICROBIOLOGY(I/II SEMESTERS)**

**EXPERIMENT: microscopic preparation of onion root tips to observe different stages of mitosis**





EXPERIMENT: culturing of bacteria by streak plate method.



**TITLE: MOLECULAR BIOLOGY AND r-DNA TECHNOLOGY/ BIostatISTICS(III/  
IV SEMESTERS)**

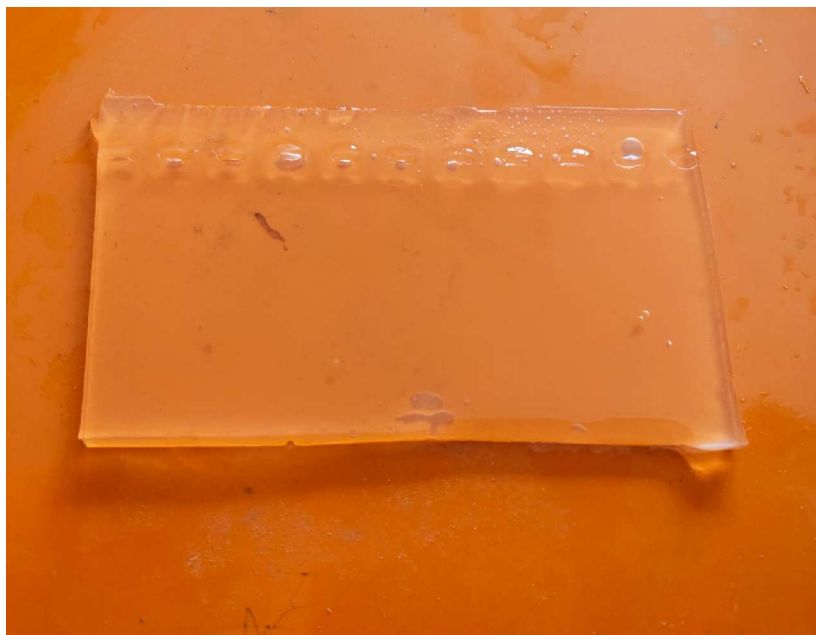
**Experiment: Isolation of DNA from plant cells (leaf/ fruits/roots)**





Experiment: Agarose gel preparation.





TITLE: PLANT BIOTECHNOLOGY/ ENVIRONMENTAL BIOTECHNOLOGY.(V/VI SEMESTERS)

Experiment: Artificial seed preparation from groundnut embryos





Experiment: estimation of biological oxygen demand in water





# **VAAGDEVI DEGREE & PG COLLEGE**

KISHANPURA, HANAMKONDA-506001

(Affiliated to Kakatiya University)

## **DEPARTMENT OF BOTANY**

### **EXPERIENTIAL LEARNING**

#### **BOTANY LABORATORY - I**









## BOTANY LABORATORY - II





Students on wet lab for the practicals



HERBARIUM CABINET









MUSEUM STORAGE RACKS

## Field Trip

We, the final year Students of B.Sc. Botany, Vaagdevi Degree & PG College, Kishanpura, Hanamkonda visited the Mallur-Medicinal Plant Conservation Area (MPCA) hill area and Tadvai forest area and Laknavaram lake-forest area on 6<sup>th</sup> November, 2022, under the able guidance of our beloved teachers Dr Sateesh Suthari, Ms. R. Bhargavi, Dr Suresh, Ms. A. Kavitha, Y. Ambika, Ms. Tejaswini, Ms. Mounika, Ms. Bhargavi and lab assistants Mr G. Mogili, Mr Sadanandam, Mr Raju from Department of Botany and other departments of the college.

We collected the plant specimens of timber yielding plants, fruit bearing plants, nuts, beverages and highly medicinal value plants from Mallur hill region and other visited places to make herbaria. The information is explained about the medicinal value and other important plants that are used for human as well veterinary purposes, food plants, fibre, vegetables, procurement of non-timber forest products (NTFPs), etc. by our beloved faculty.

**Forest types of visited areas:** It is tropical dry deciduous type dominated by *Terminalia alata*, *Diospyros melanoxylon*, *Chloroxylon swietenia*, *Hardwickia binata*, *Lannea coromandelica*, *Gitonia floribunda*, *Cleistanthus collinus*, *Madhuca longifolia* var. *latifolia*, *Combretum albidum* and *Terminalia arjuna* along the stream.

**Observation:** It is observed that on the name of development, the construction of guest house, stairs to temple, laying pathway to Chintamani jalapatam (waterfall) made the core areas of the hill region disturbed in Mallur hills. And also observed that the intrusion of invasive alien species into the core areas of forest regions is destroying in all the sites, mainly by *Hyptis suaveolens*, *Chromolaena odorata*, *Parthenium hysterophorus*, *Lantana camara*, *Tridax procumbens*, *Cyanthillium cinerium*, *Acmella paniculata*, etc.

**Inference:** It is all of our primary responsibility to utilize the nature and natural resources in a sustainable way and conserve the native microbial, floral and faunal diversity (biodiversity) from various threats caused by anthropogenic pressures.





Explanation about vegetation at Mallur hill area







Students assemblage at Black Berry Island in Eturnagaram Wildlife Sanctuary



Instructing the students: how to behave with the nature





Weeding as part of Swachch Bharath program



Weed clearing

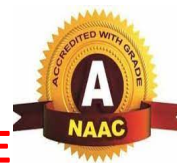


Swachch Bharath Program on college campus





**VAAGDEVI DEGREE & PG COLLEGE**



**KISHANPURA, HANAMKONDA**

**DEPARTMENT OF CHEMISTRY**

**CHEMISTRY LAB**

**Experiential Learning**







S.NO	SEM	PRACTICAL
1	I	Qualitative Analysis
2	II	Quantitative Analysis
3	III	Organic Synthesis
4	IV	Qualitative Analysis of Organic Compounds
5	V	Physical Chemistry - I
6	VI	Physical Chemistry - II





## VAAGDEVI DEGREE & PG COLLEGE

**DIST: HANUMAKONDA, TELANGANA STATE-506001**

*(Affiliated to Kakatiya University, Warangal)*

*(e-mail: [principal@vaagdevicolleges.com](mailto:principal@vaagdevicolleges.com))*

*(website: [www.vaagdevicolleges.com](http://www.vaagdevicolleges.com))*



### Experiential learning PG Chemistry lab photos

PG - Organic lab



PG - Inorganic lab



PG - Physical lab





# VAAGDEVI DEGREE & P.G. COLLEGE

Kishanpura, Hanamkonda



DEPARTMENT OF FOOD SCIENCE AND QUALITY CONTROL  
AND  
DEPARTMENT OF NUTRITION AND DIETETICS

(FOOD AND NUTRITION DEPARTMENT)

Experiential Learning:

**FOOD SCIENCE-LAB**





# NUTRITION-LAB



## FOOD AND NUTRITION DEPARTMENT :

All students in the classes Both (UG and PG ) are In the group form of t arrangement perform the same work simultaneously the same work is conducted in small groups of 5 which will help the students to gain knowledge in food processing .

### Students doing practicals in vegetable and fruit processing and preservation



  
HEAD  
Department of Food Science & Quality Control  
Vaagdevi Degree & PG College  
Hanamkonda

  
Principal  
Vaagdevi Degree & P.G. College  
Kishanpura, Hanamkonda







Viswambhara Educational Society's

# VAAGDEVI DEGREE AND PG COLLEGE

(Affiliated to Kakatiya University)

Warangal, Telangana.

**Department of Microbiology**

Experiential Learning

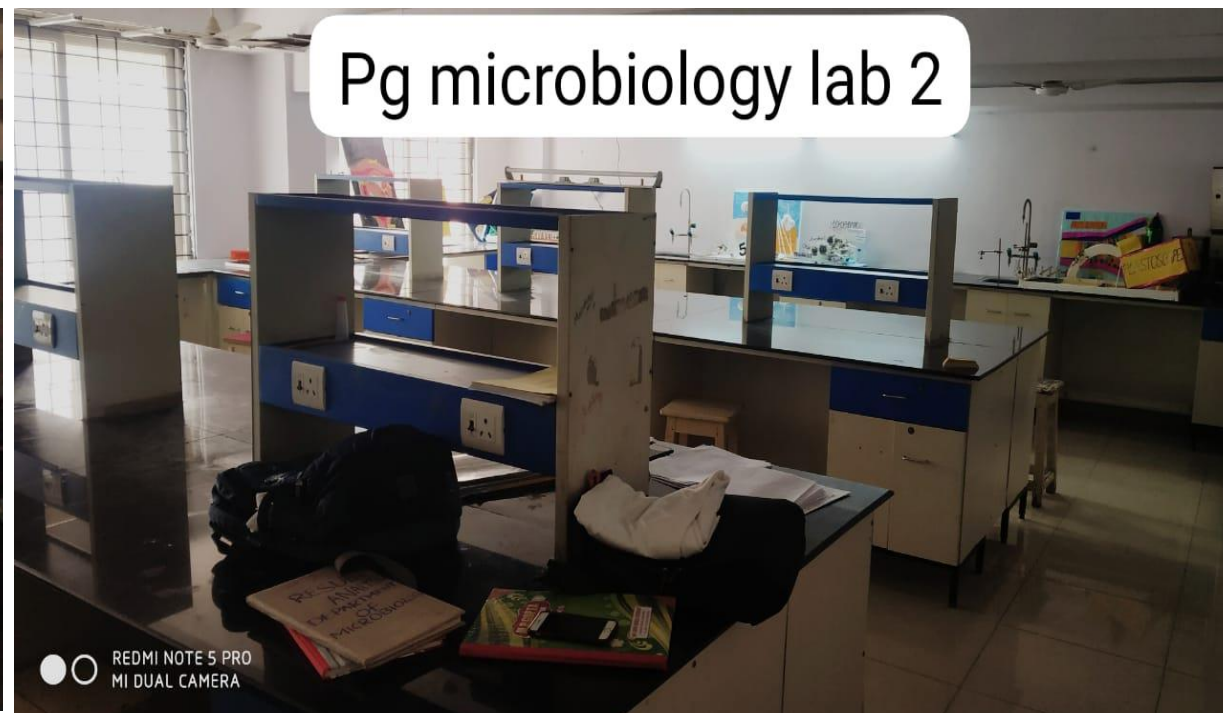
Microbiology lab



Pg microbiology lab 1



Pg microbiology lab 2



Ug microbiology lab





# Department of Microbiology

All students in the classes (UG and PG ) are In the group form of t arrangement and perform the same work simultaneously the same work is conducted in small batches which will help them

## The Preparation of culture media for the Isolation of pure cultures of microorganisms





*A. Subashan*

**Principal**  
Vaagdevi Degree & P.G. College  
Kishanpura, Hanamkonda



# DEPARTMENT OF PHYSICS & ELECTRONICS

LABORATORY METHOD FOR EXPERIENTIAL & PARTICIPATIVE LEARNING



ELECTRONICS LAB



GENERAL PHYSICS LAB



MECHANICS LAB



OPTICS LAB





VAAGDEVI DEGREE & PG COLLEGE



## Department of Zoology

### EXPERIENTIAL LEARNING

### Laboratory Pictures



Invertebrate & Vertebrate Laboratory



Animal Physiology, Biochemistry, Molecular Biology Laboratory



Genetics, Evolution Laboratory